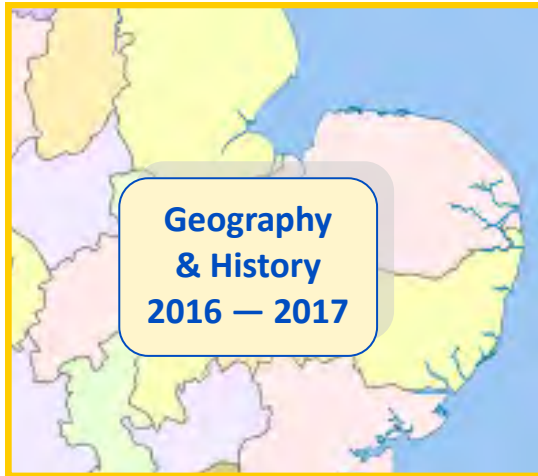


PRIMARY GEOGRAPHY & HISTORY NETWORK



Cambridgeshire Environmental Education Service (CEES)
would like to invite schools in Cambridgeshire and
the surrounding area to subscribe to the
Primary Geography & History Network.

Network members benefit from:

- One **free** place per school at each termly **Network Meeting**, with a choice of dates and venues in Cambridge and Peterborough
- Termly emailing of a **Primary Geography & History Newsletter** with curriculum updates, news, courses and events
- Occasional **subject updates** emailed exclusively to the network members emailing list
- Subject **advice** and access to consultancy service, see inside

Annual subscription: £60

Cambridgeshire Local Authority schools: £50

To subscribe to the Geography & History Network:

Email: cees.stibbington@cambridgeshire.gov.uk or

Tel: 01780 782386 for further information

Quality Badge awarded by



Geography & History Network

Subject Leader Meetings

Network meetings provide an opportunity to meet with other subject leaders to discuss updates, topical issues and developments in the subjects and share examples of good practice. For those network members who are unable to attend any meeting, details of the agenda and any relevant materials will be emailed.

Network meetings are held on Thursdays from 4.00 to 5.30pm

Dates and venues for 2016—17

Arbury Primary School
Cambridge CB4 3HN

13 October

2 February

18 May

Hampton Hargate Primary School
Peterborough PE7 8BZ

3 November

9 February

25 May

One place per meeting at NO CHARGE for network members

Additional places per meeting: £25

Cambridgeshire Local Authority schools: £20

Primary Geography & History Consultancy

Geography

Helen Johnston

**CEES teacher at Stibbington Centre
and geography adviser**

helen.johnston@cambridgeshire.gov.uk

History

Andrew Wrenn

**Independent history adviser
in the Cambridgeshire area**

andrew_wrenn@btinternet.com

Consultancy and support can be provided through school-based pupil workshops and individual or whole staff development, as well as commissioned work carried out away from school.

Consultancy rates: Whole day - £375, half day - £250, one hour - £90

Email: cees.stibbington@cambridgeshire.gov.uk

Website: www.cees.org.uk Tel: 01780 782386

Primary Geography & History CPD

6 Oct 2016	Leading Geography in primary schools Leading History in primary schools Full day and half day options with an opportunity for lunchtime networking and consultancy at Stibbington Centre PE8 6LP	9.30—12.30 1.30—4.30
26 Jan 2017	Assessment in Geography and History at Bar Hill Primary School CB23 8DY	1.30—4.30
23 Mar 2017	Mapping Skills and Digimap at Mayfield Primary School CB4 3HN	1.30—4.30
8 June 2017	Extended writing in Geography and History at Stibbington Centre PE8 6LP	1.30—4.30

Course fees:

Half day

£60

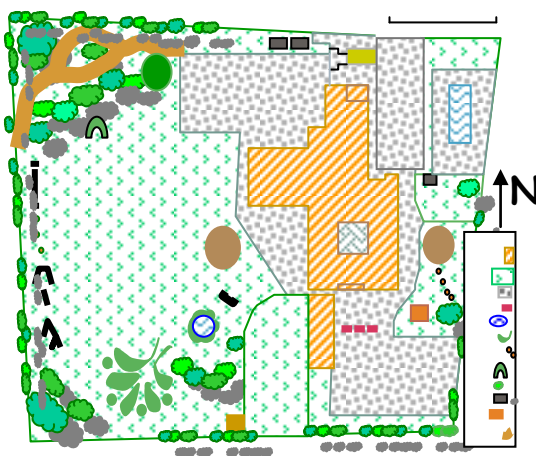
Full day

£90

CEES School Grounds Mapping Service

To support the development of fieldwork and map skills required in the National Curriculum, CEES can produce pupil-friendly maps of the school grounds suitable for use with KS1 and 2. To enable flexibility of use for a variety of learning activities a set of maps is supplied in PowerPoint format including colour and b/w, grid and no-grid, labels and no labels.

Charge: £200



Email: cees.stibbington@cambridgeshire.gov.uk

Website: www.cees.org.uk **Tel:** 01780 782386

CEES School Grounds Consultancy Service

The outdoor classroom is an extremely valuable resource for learning. An imaginatively designed and well-developed outdoor environment can have a very significant influence on children's **academic achievement** as well as **behaviour** and **personal development**.

CEES' School Grounds Consultancy aims:

- to encourage the **development of the whole school grounds** in order to create a rich resource for learning and play, and
- to advise on **using the grounds for teaching and learning** across the curriculum.

CEES' whole staff CPD days on using the school grounds to support the curriculum are tailor-made programmes that will be discussed and agreed with schools. All sessions involve "hands-on" learning activities suitable for use in any school grounds and may include English, maths, science, geography, and art and design. Learning in the school grounds days may be delivered on school sites or as away-days at Stibbington Centre or Burwell House.

Consultancy rates:

Whole day	£400
Half day	£250
One hour	£90

CEES Courses for schools

CEES also offers **Day Courses** for Foundation Stage, Key Stage 1 and Key Stage 2 classes to support and enhance the curriculum, as well as **Residential Courses** at **Stibbington Centre**.

The charge for all CEES Day Courses is £330 per class per day or £310 for Cambridgeshire Local Authority.

Fees for a 3-day Residential Course start at £75 per pupil, with bursaries available for those who are eligible for Pupil Premium.

CEES courses are:

- Led by CEES' qualified, experienced teachers
- Risk assessed and designed to support specific curriculum-linked learning objectives
- Hands-on learning experiences outside the classroom
- Fully equipped, with specialist resources and equipment
- Rated **OUTSTANDING** by the Council for Learning Outside the Classroom's Quality Badge assessment

Tel: **01780 782386**

Website: **www.cees.org.uk**

Email: **cees.stibbington@cambridgeshire.gov.uk**

Twitter: **[@cees_cambs](https://twitter.com/cees_cambs)**